

BILAGA 9

Lokalbeskrivningar samt profiler för inventering av makroalger

Lokalbeskrivningar

A1. Bråviken ost Lönö

Angiven position

A1

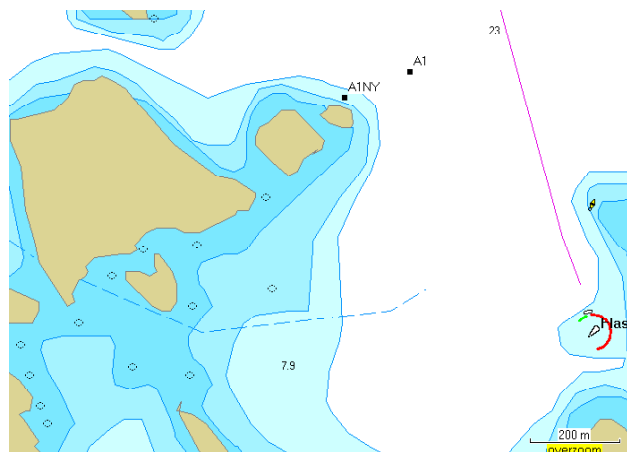
Swedish Grid (RT90)

Y1559934 X6496566

Position 12-sep 2003

A1NY

Y1559789 X6496507



A2. Kåreholm

Angiven position

A2

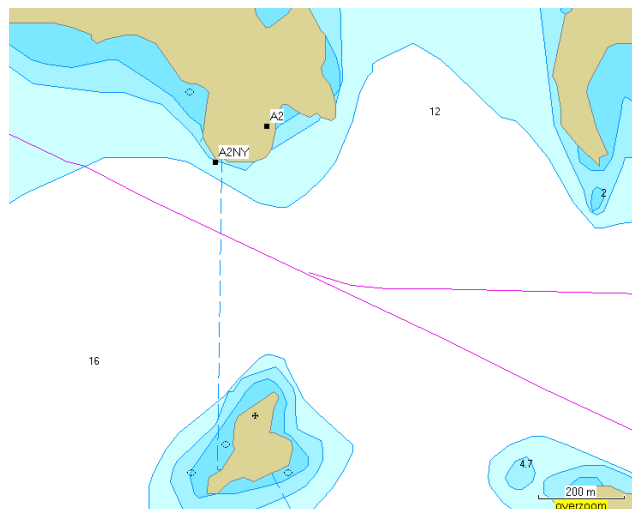
Swedish Grid (RT90)

Y1553467 X6478017

Position 17-sep 2003

A2NY

Y1553349 X6477932



A3. Stora Lundskär.

Angiven position

A3

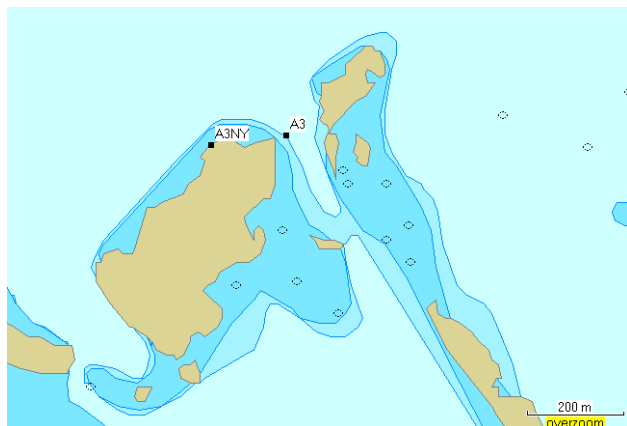
Swedish Grid (RT90)

Y1570347 X6453401

Position 9-sep 2003

A3NY

Y1559789 X6496507



A4. Valdemarsviken.

Angiven position

A4

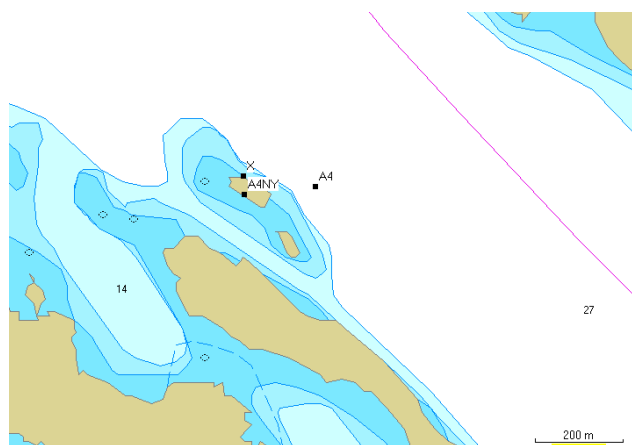
Swedish Grid (RT90)

Y1556164 X6442890





















Position 11-sep 2003

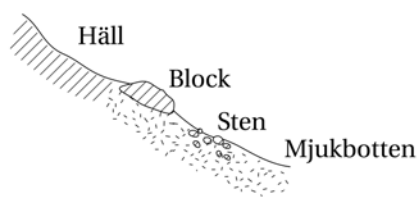
A4NY

Y1556002 X6442868

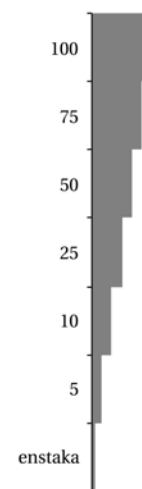


Profiler - förklaringar

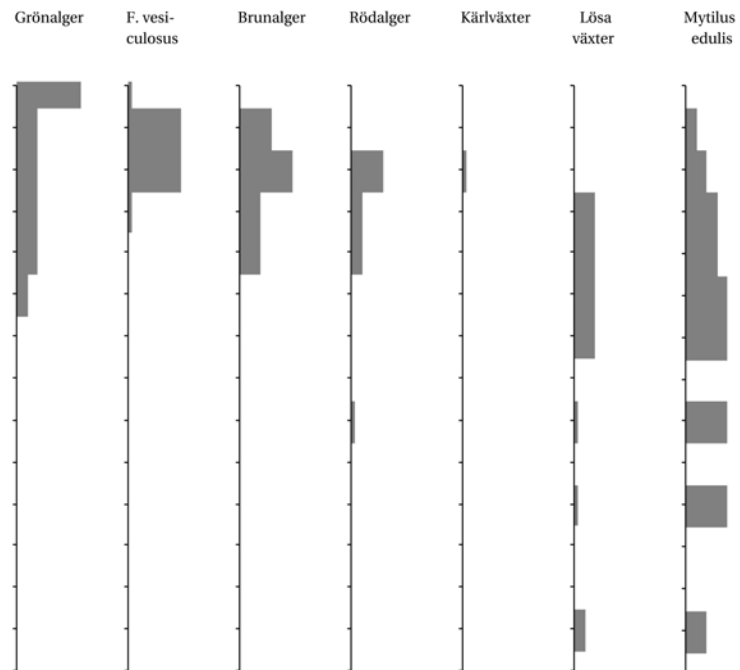
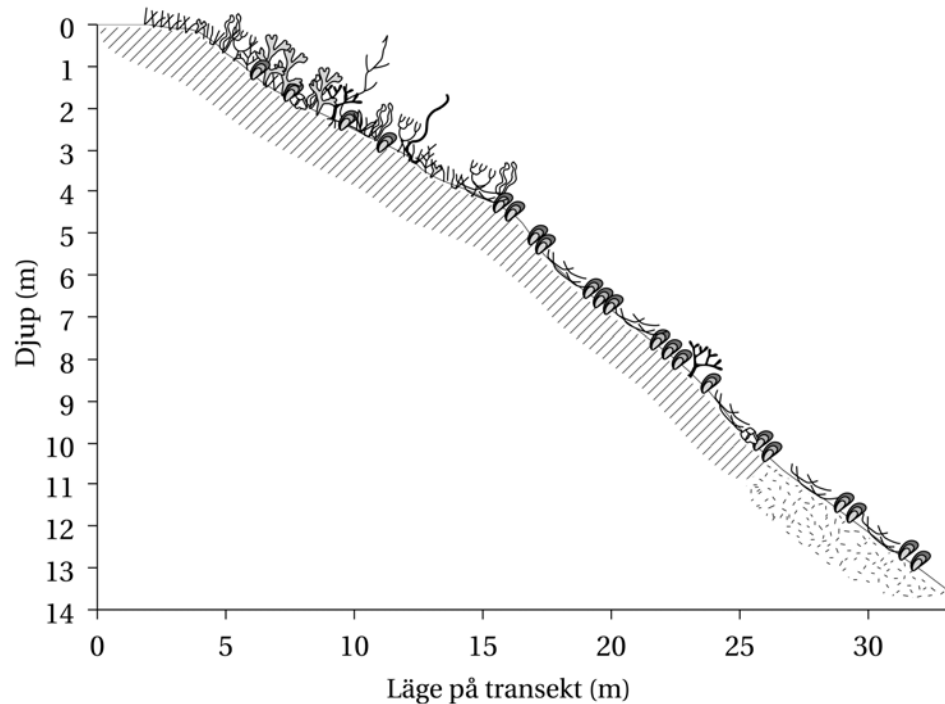
Sphacelaria spp		Characeae	
Cladophora spp		Myriophyllum spp	
Enteromorpha spp		Ruppia / Zannichellia	
Dictyosiphon / Stictyosiphon		Potamogeton pectinatus	
Fucus vesiculosus		Potamogeton perfoliatus	
Chorda filum		Zostera marina	
Pilayella / Ectocarpus		Mytilus edulis	
Furcellaria lumbricalis		Balanus improvisus	
Ceramium tenuicorne			
Rhodomela / Polysiphonia			
Phyllophora spp			
Lösa växter			

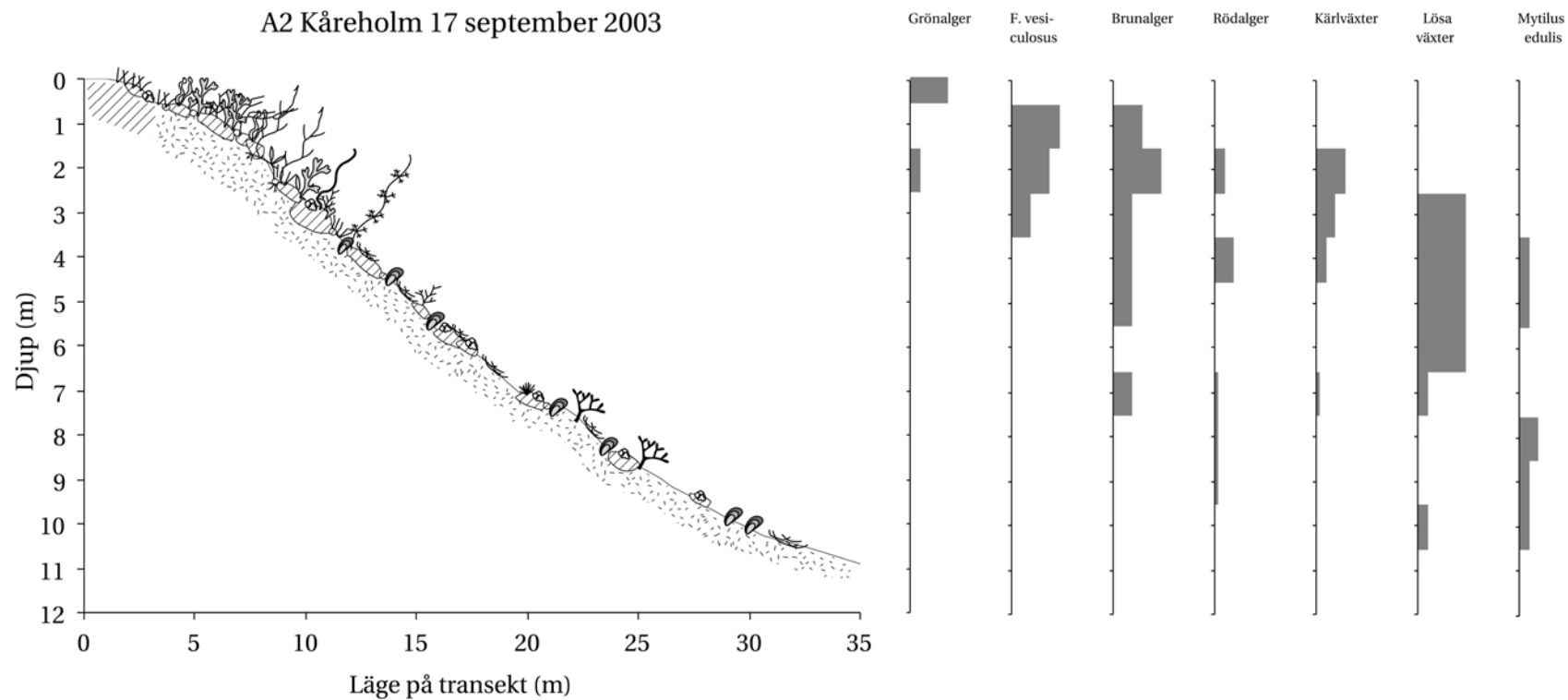


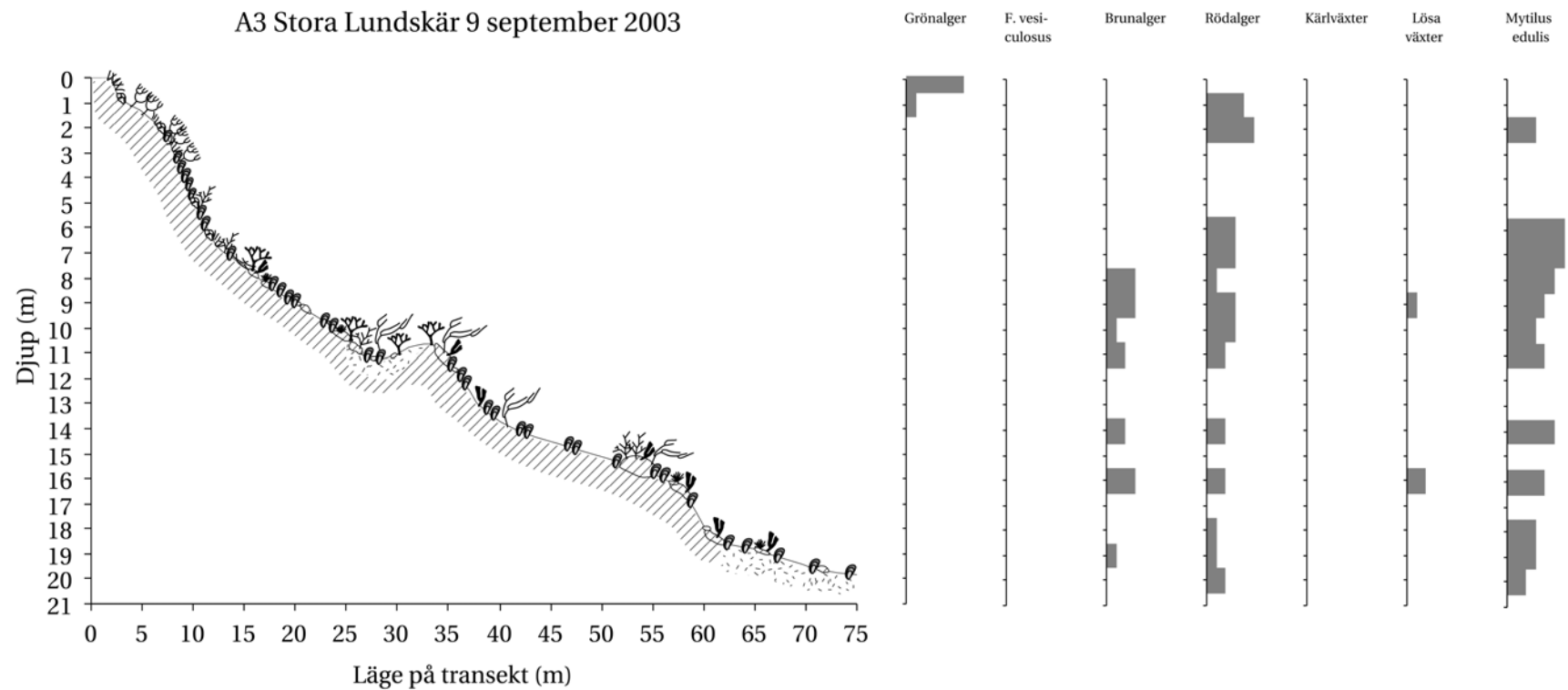
Täckningsgrad (%)



A1 Bråviken ost Lönö 12 september 2003







A4 Valdemarsviken 11 september 2003

