

BILAGA 10

Lokalbeskrivningar samt profiler för inventering av makroalger

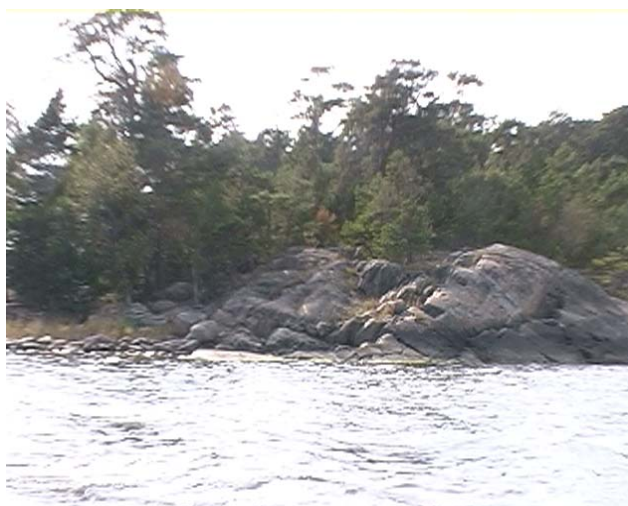
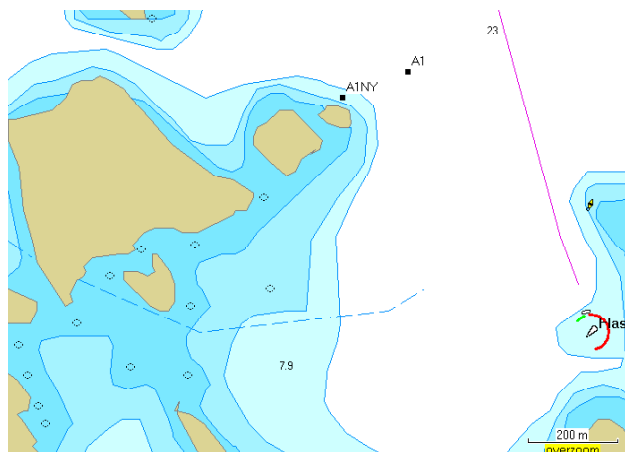
Lokalbeskrivningar

A1. Bråviken ost Lönö

Position 14-sep 2006 A1NY
(samma position som 2003)

Swedish Grid (RT90)

Y1559789 X6496507

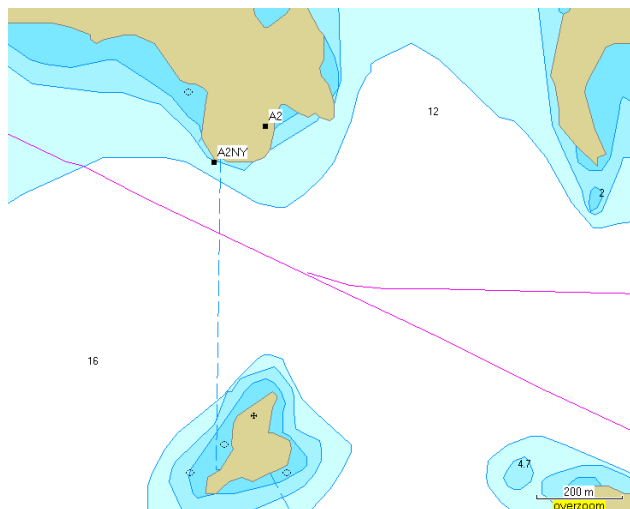


A2. Kåreholm

Position 13-sep 2006 A2NY
(samma position som 2003)

Swedish Grid (RT90)

Y1553349 X6477932

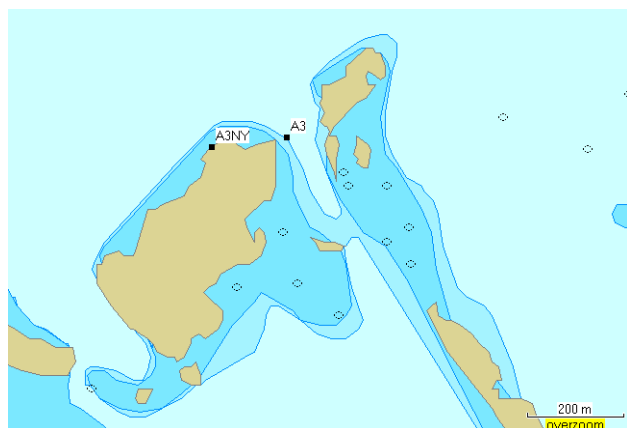


A3. Stora Lundskär.

Position 13-sep 2006 A3NY
(samma position som 2003)

Swedish Grid (RT90)

Y1559789 X6496507

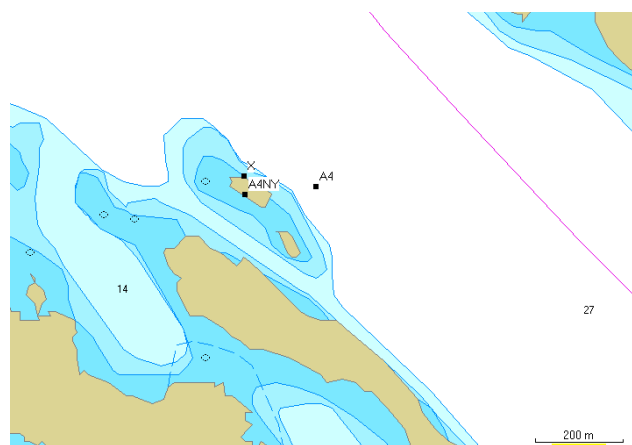


A4. Valdemarsviken.

























Position 12-sep 2006 A4NY
(samma position som 2003)

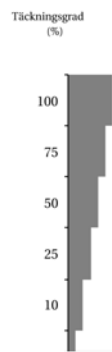
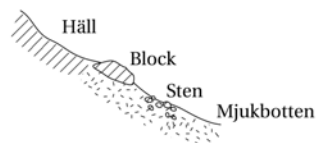
Swedish Grid (RT90)

Y1556002 X6442868

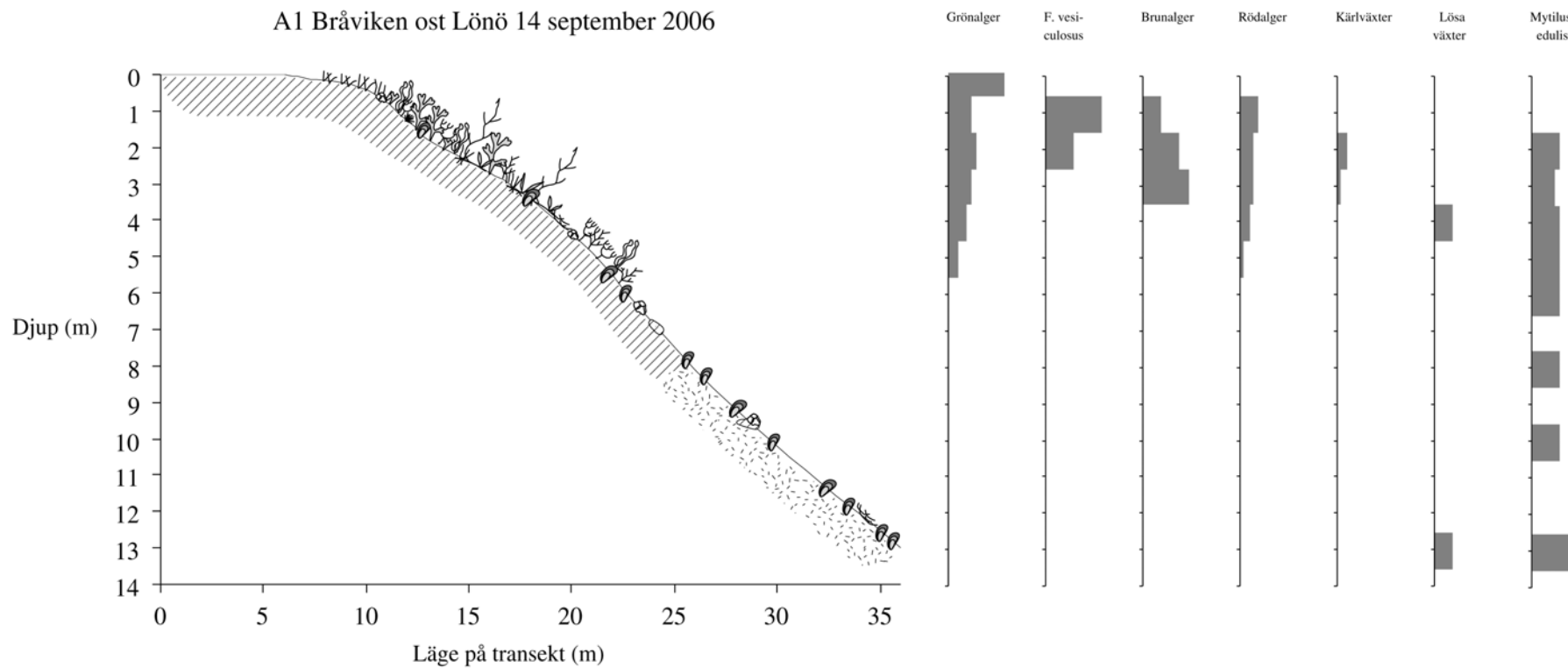


Profiler - förklaringar

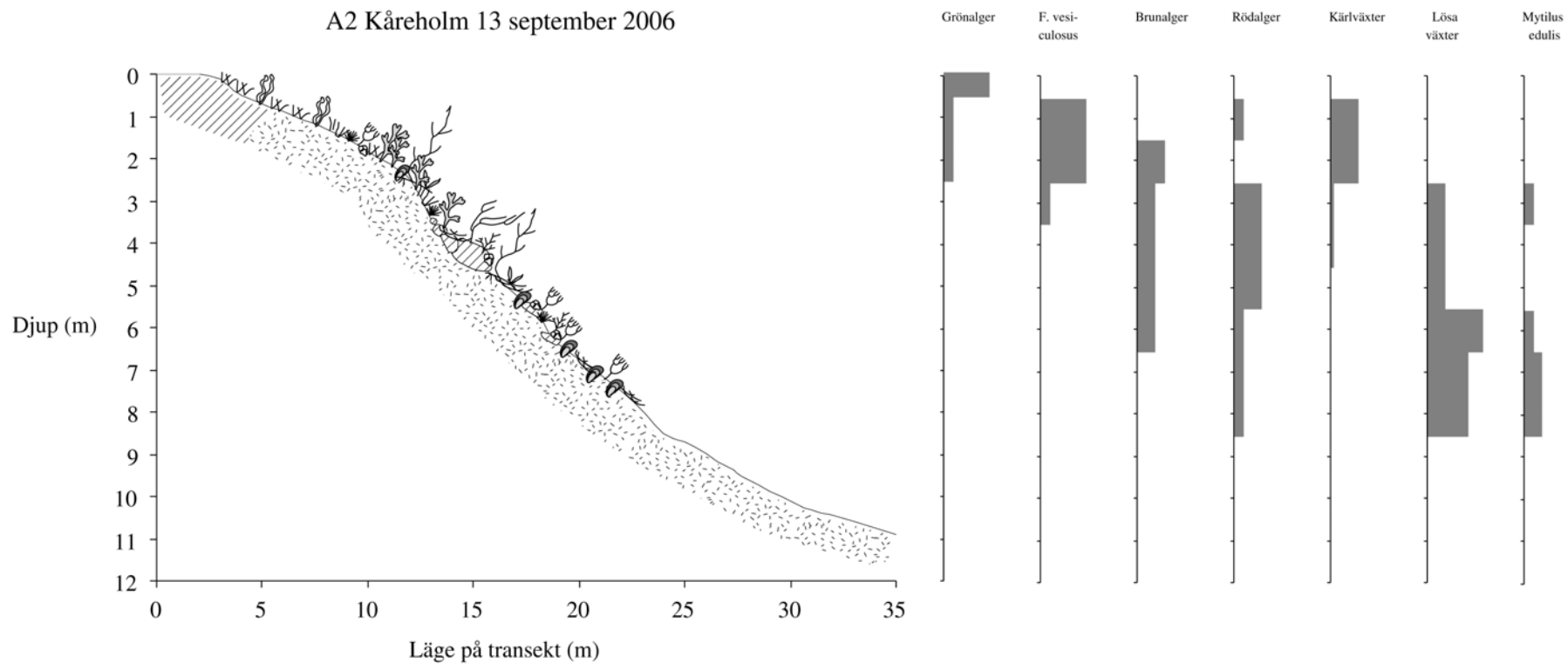
<i>Cladophora spp</i>			<i>Characeae</i>
<i>Enteromorpha spp</i>			<i>Myriophyllum spp</i>
<i>Ulva lactuca</i>			<i>Ruppia / Zannichellia</i>
<i>Sphacelaria spp</i>			<i>Potamogeton pectinatus</i>
<i>Pilayella / Ectocarpus</i>			<i>Potamogeton perfoliatus</i>
<i>Dictyosiphon foeniculaceus</i>			<i>Zostera marina</i>
<i>Fucus vesiculosus</i>			<i>Lösa växter</i>
<i>Chorda filum</i>			<i>Mytilus edulis</i>
<i>Ceramium tenuicorne</i>			<i>Balanus improvisus</i>
<i>Rhodomela / Polysiphonia</i>			
<i>Furcellaria lumbricalis</i>			
<i>Phyllophora spp</i>			



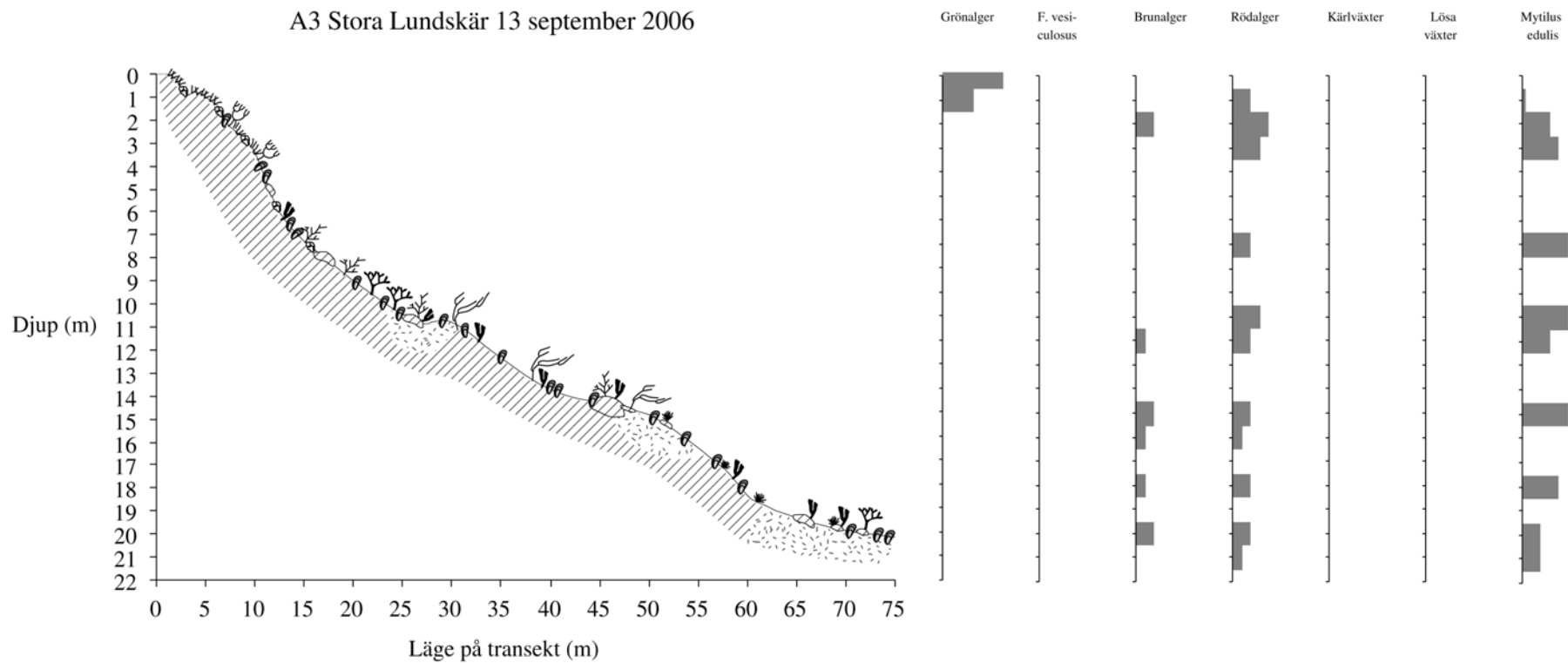
A1 Bråviken ost Lönö 14 september 2006



A2 Kåreholm 13 september 2006



A3 Stora Lundskär 13 september 2006



A4 Valdemarsviken 12 september 2006

